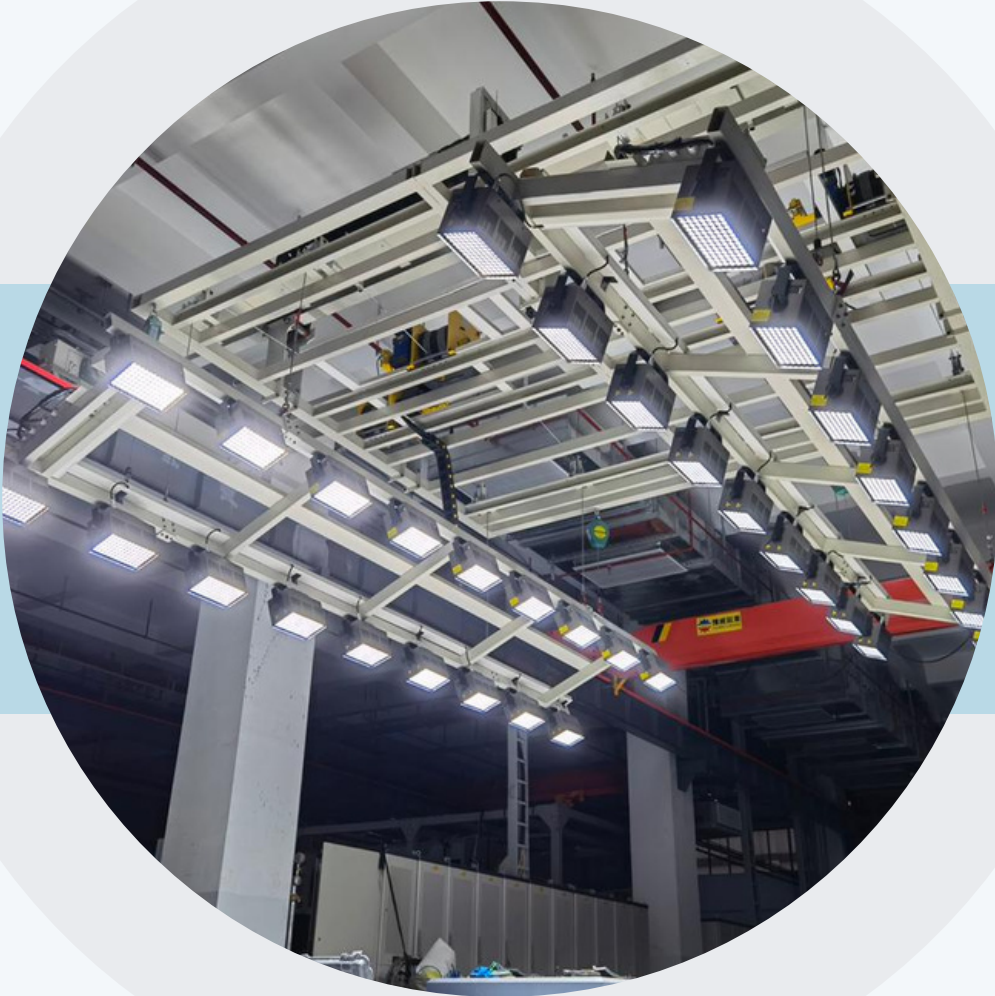


WINSURE®



ON BOARD LED LIGHTS

WS-CL-100(A)

www.sh-winsure.com



Email: ws004@sh-winsure.com

Call/Whatsapp: +919538394613 (India)

<http://www.sh-winsure.com>



WS-CL-100(A)

Product Image



Key Features



- Smart design for easy installation
- Carrying 90G high acceleration
- Round and square can be selected according to the scene
- Remote control switch interface
- Compatible with on-board crash power supply



Email: ws004@sh-winsure.com

Call/Whatsapp: +919538394613 (India)

<http://www.sh-winsure.com>



WS-CL-100(A)

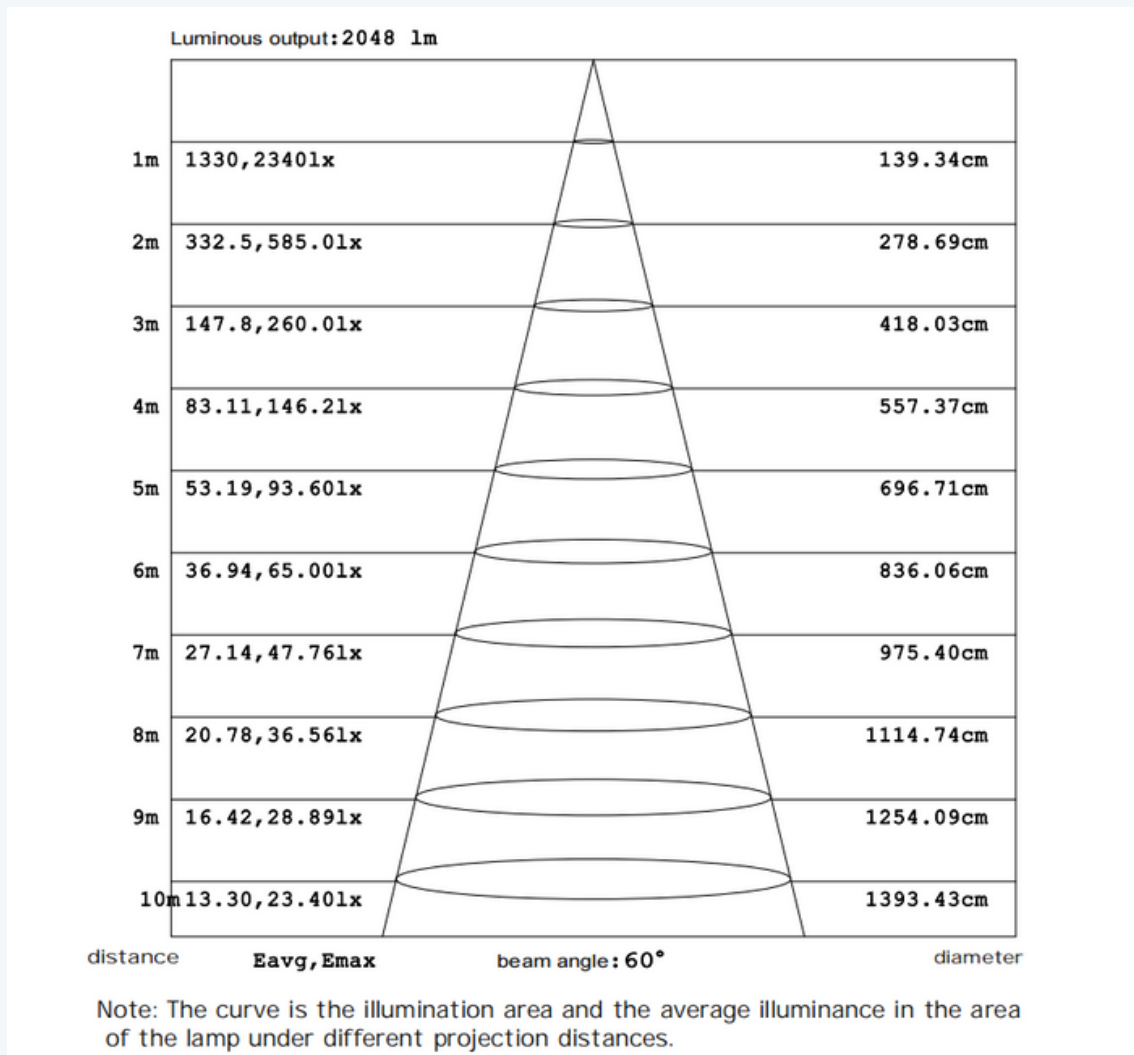
Technical Parameters

Model No.	WS-CL-100W(A/B)	Light effect	64.32lm/W
Power	240W	Beam Angle	30°/45°/60°
Voltage	220V	Luminous surface	A: 70mm*70mmB:3.2 4*0.38square(m)
Working life	≥50000h	Lamp efficiency	100%
Working time	Light up at room temperature for 15 minutes	Total luminous flux	A:3319lm B:6432lm
Dimension	A:70*70*76(L*W*H) mmB: 3.14*0.38 square (m)	Weight	2kg
Working temperature	-45°C to +90°C	Lamp protection grade	IP51
10,000 frames of high-speed shooting without flicker			



WS-CL-100(A)

WS-CL-100W(A) Illuminance

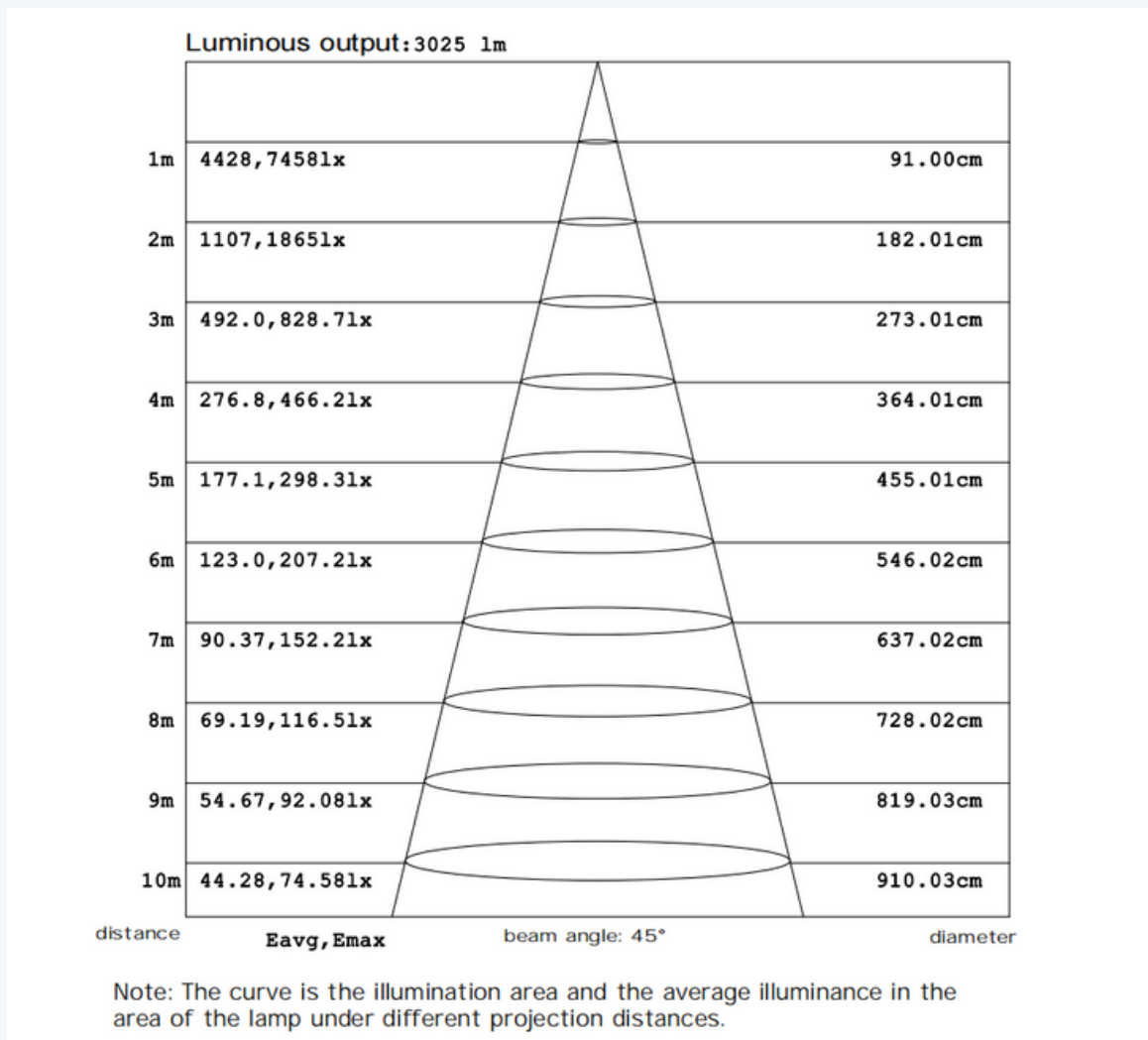


Email: ws004@sh-winsure.com
 Call/Whatsapp: +919538394613 (India)
<http://www.sh-winsure.com>



WS-CL-100(B)

WS-CL-100W(B) Illuminance



Email: ws004@sh-winsure.com
 Call/Whatsapp: +919538394613 (India)
<http://www.sh-winsure.com>



WS-1000W

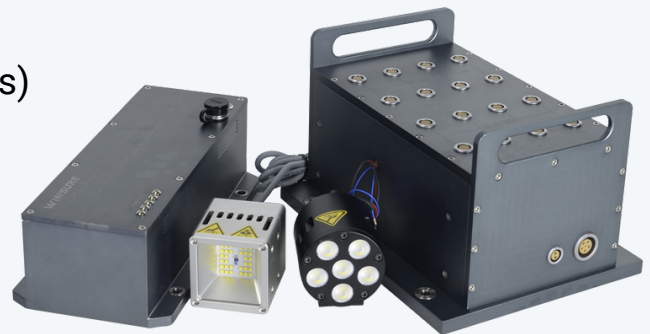
Application Scenario

- Car crash in-car high-speed camera capture application scenario
- Drop test (follow-up) application scenarios
- Military and aerospace application scenarios



WS-1000W Battery

- Transformer power supply (8/16 channels)
- Battery (48V/6AH)



Email: ws004@sh-winsure.com
Call/Whatsapp: +919538394613 (India)
<http://www.sh-winsure.com>

